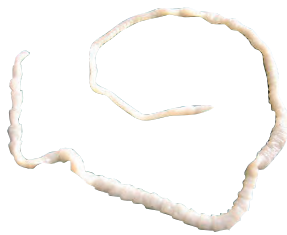


Life Cycle of Tapeworm in Dogs and Cats

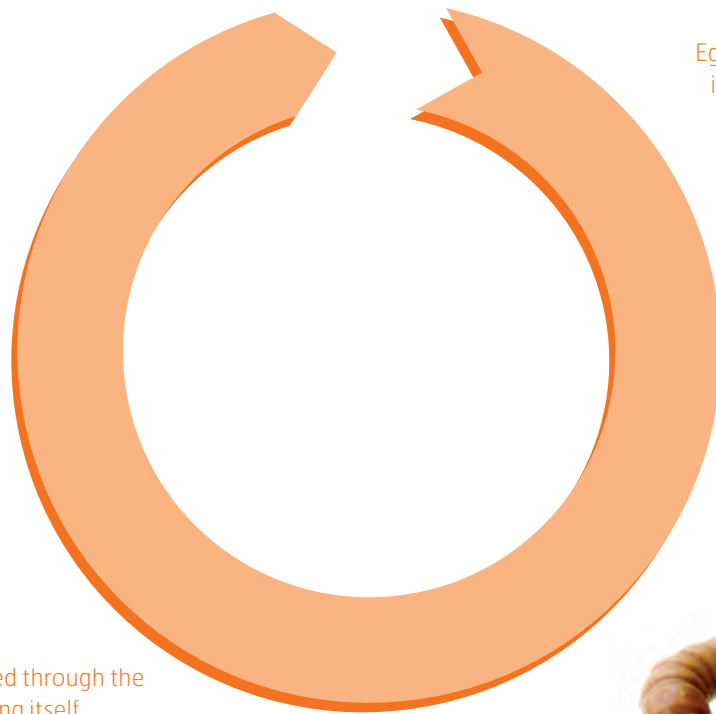


Eggs in faeces

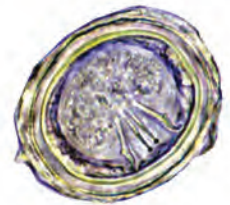


The flea is broken down by enzymes in the stomach - releasing the immature worm into the intestines, where it matures and lays eggs.

The flea is ingested through the pet grooming itself.



Egg is eaten by flea larvae scavenging in the environment. It then hatches within the flea.



Immature worm in flea